

## Brisbane West BUG bicycle network plan and S4CBNE collaborative map

1 message

**Brisbane West Bicycle User Group** <brisbanewestbug@gmail.com>

27 October 2016 at 14:12

To: Mark Pattemore <Mark.Pattemore@brisbane.qld.gov.au>, Antony Holloway <Antony.Holloway@brisbane.qld.gov.au>

Hi Mark and Antony

As I mentioned in our meeting on Wednesday 5 October 2016 (Indooroopilly bikeway project and Moggill Road signalisation planning), Brisbane West BUG has undertaken a bicycle network planning exercise predominantly for the western suburbs of Brisbane. Additionally, I'd like to present to you our bike count data, and the Brisbane Space for Cycling Brisbane collaborative map, where residents of Brisbane have marked in which areas or routes are good for cycling, and also suggestions for new or improved cycling infrastructure.

I'll outline these separately below:

### West BUG Bicycle Network Plan

The network planning exercise for West BUG is intended as our suggested input for the review of the Brisbane City Plan Bicycle Network Overlay (BNO). It reinforces some primary and secondary routes that are already in the existing BNO which we wish to retain, and also adds new routes which we believe are essential or desirable for the network. At present the map looks in detail at the inner suburbs and has primary routes for outer suburbs.

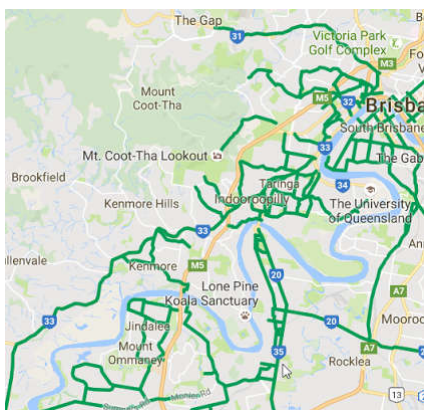
Some pertinent examples:

- Retain: Montague Road and Vulture St, West End.
- New primary route: Honour Avenue (Chelmer – Sherwood).
- New primary route: From Park Rd, Milton to Bicentennial Bikeway via Railway Terrace, Cribb Street, Little Cribb Street and the Coronation Drive underpass. This route is favoured by most bike riders over using Park Rd to access the Bicentennial bikeway (the current primary route).

The network plan has been informed by West BUG community and members' input. Every new member completes a survey and tells us what issues and routes they want improved in their area. Hence the plan attempts to encapsulate local knowledge for many areas of Brisbane's West.

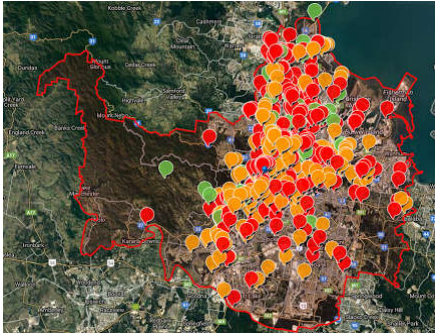
The network map is best viewed in google earth with the existing infrastructure and trip destinations (schools, libraries, etc). You can download the plan and supporting files from the project page or using these two links [\[1\]](#) [\[2\]](#).

More information is on the project page: <http://westbug.org.au/index.php/our-work/bicycle-network/>



## Space for Cycling Brisbane collaborative map

As part of the Space for Cycling Brisbane, the collaborative map gave residents of Brisbane an opportunity to add bike-related issues in the lead up to the 2016 local government election. ARUP hosts the collaborative map which can be found on this webpage: <https://www.collaborativemap.com/Space4Cycling>



Contributors could submit a comment as either “a great space,” “not a great space” or “my idea for this space.” It is now locked for editing but still fully viewable. We note that many of the issues raised would be cheap and easy to implement solutions for.

The outputs from the map have been divided into BUG geographical areas. Please [see link](#) for the Western suburbs.

### **Bike/active travel traffic counts**

Brisbane West BUG undertakes periodic manual active travel traffic counts to support participation monitoring and our strategic planning goals. These focus on bike-only or bike and pedestrian travel patterns, depending on traffic volumes and complexity of data collection.

Count sites include the Bicentennial bikeway, and Coronation Drive underpasses at Land Street and Milton. The raw data is made available for free on our website, and will be updated roughly once a month (see link).  
<http://westbug.org.au/index.php/bike-counts/>

I would be happy to discuss any of the above in further detail with you. Please also feel free to share the information within this email within BCC.

Kind regards

Jacob Curtis  
**Co-convenor**  
**Brisbane West Bicycle User Group**  
Email: [brisbanewestbug@gmail.com](mailto:brisbanewestbug@gmail.com)  
Phone: 0429194392